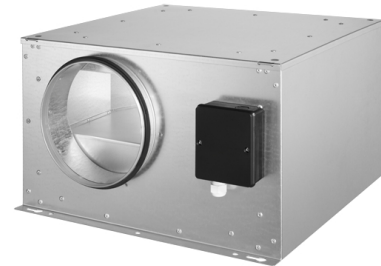
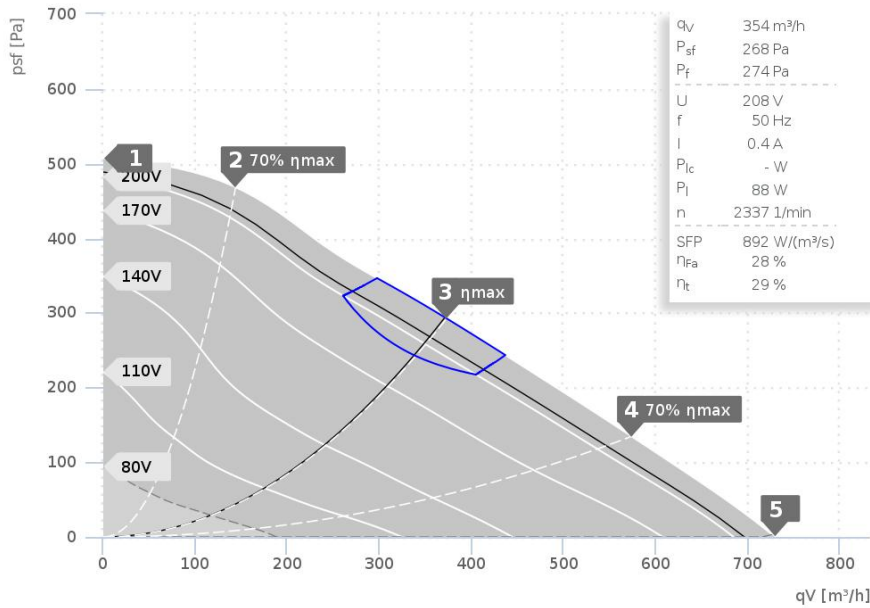


DATA SHEET

ISOR 200 E2 11 | 114886



- Backward curved centrifugal fan
- Galvanized metal housing
- Speed controllable
- Swing-out fan unit
- Sound insulated

— LOT6 - 2018

Operating Point		1	2	3	4	5
Current I	A	0,4	0,4	0,4	0,4	0,4
Power consumption P _l	W	79	87	99	99	97
RPM n	1/min	2675	2584	2450	2446	2480
SPL inlet L _{WA5}	dB(A)	62	60	60	63	64
SPL outlet L _{WA6}	dB(A)	73	73	74	75	76
SPL casing break out L _{WA2}	dB(A)	58	57	56	58	59

Sound power (L _W) dB(A)		Medium Frequency Band								
		Σ	63	125	250	500	1k	2k	4k	8k
Inlet	L _{WA5}	59	-	47	54	57	44	43	43	36
Outlet	L _{WA6}	72	-	52	59	68	66	65	61	54
Casing	L _{WA2}	55	-	46	48	53	39	34	33	28

ISOR 200 E2 11 114886	
Voltage U _N	230 V 1~
Current I _{max}	0,5 A
Ambient Temperature t _A	80 °C
Medium temperatures t _M	80 °C
Speed Control	V
Motor Protection	TAI
Isolation Class	F
Weight	17,7 kg

