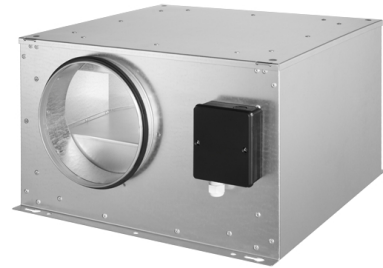
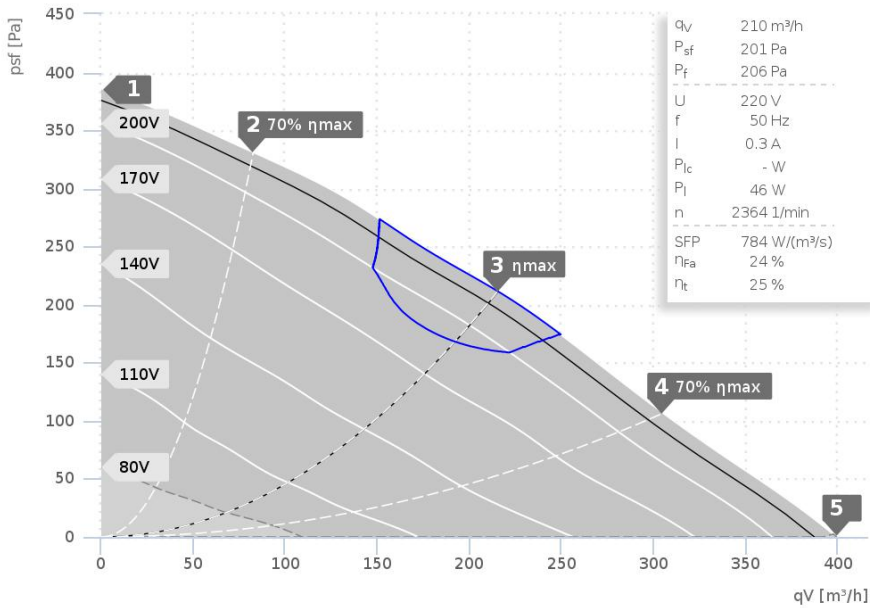


# DATA SHEET

ISOR 160 E2 20 | 135005



- Backward curved centrifugal fan
- Galvanized metal housing
- Speed controllable
- Swing-out fan unit
- Sound insulated

— LOT6 - 2018

Operating Point		1	2	3	4	5
Current I	A	0,3	0,3	0,3	0,3	0,3
Power consumption P <sub>1</sub>	W	40	43	48	49	49
RPM n	1/min	2627	2539	2421	2397	2402
SPL inlet L <sub>WA5</sub>	dB(A)	54	53	53	54	57
SPL outlet L <sub>WA6</sub>	dB(A)	66	66	66	68	71
SPL casing break out L <sub>WA2</sub>	dB(A)	52	51	50	52	54

Sound power (L <sub>W</sub> ) dB(A)		Medium Frequency Band								
		Σ	63	125	250	500	1k	2k	4k	8k
Inlet	L <sub>WA5</sub>	53	37	42	50	46	38	38	35	29
Outlet	L <sub>WA6</sub>	65	31	47	59	61	59	54	51	44
Casing	L <sub>WA2</sub>	49	33	41	46	44	34	28	24	19

ISOR 160 E2 20   135005	
Voltage U <sub>N</sub>	230 V 1~
Current I <sub>max</sub>	0,3 A
Ambient Temperature t <sub>A</sub>	70 °C
Medium temperatures t <sub>M</sub>	70 °C
Speed Control	V
Motor Protection	TMI
Isolation Class	F
Weight	11,8 kg

